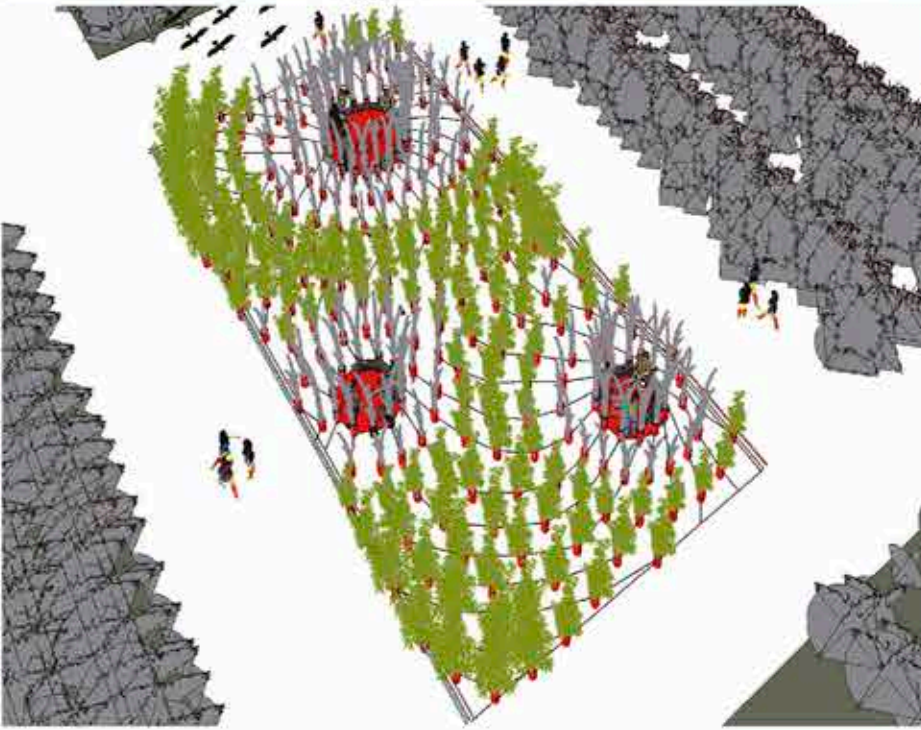
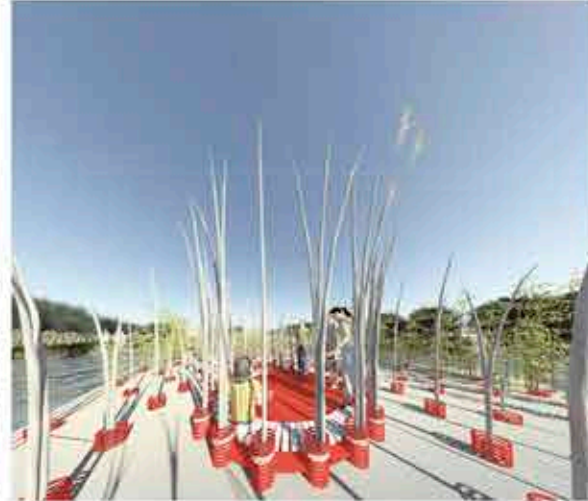
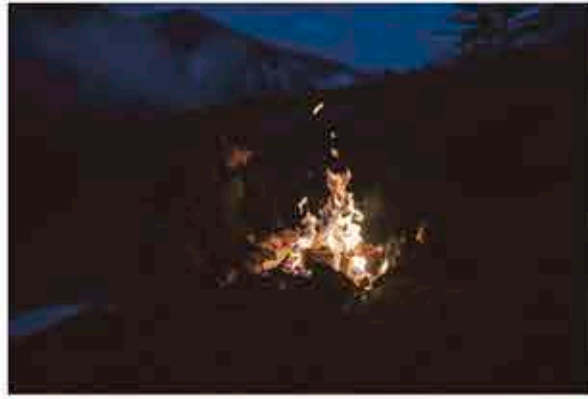


**MEMORY.** The proposal is based on the acceptance of positive vision of the Fire as Messages which has historically had negative connotations. Fire as messages can create unique forms of beauty. Both are a natural part of many forest ecosystems, and can serve to renew and invigorate forests. The installators incorporate activities and event: cuisines areas and eating places.

Instead of seeing the ubiquitous creation of mediocre naturalistic pastoral landscapes, using buried utilities or superficial mimetic pipelines, the proposal has replaced this approach for a more focused exploration of an entertaining playground of pipelines' network, as well as a register of installations in the design of the unnaturalness of the landscape.

**LOCATION:** Ciudad lineal\_Aparcamiento calle Marqués de corbera, la Elipa.



THE BEAUTY OF INFRASTRUCTURE. Transversal Section 1:100

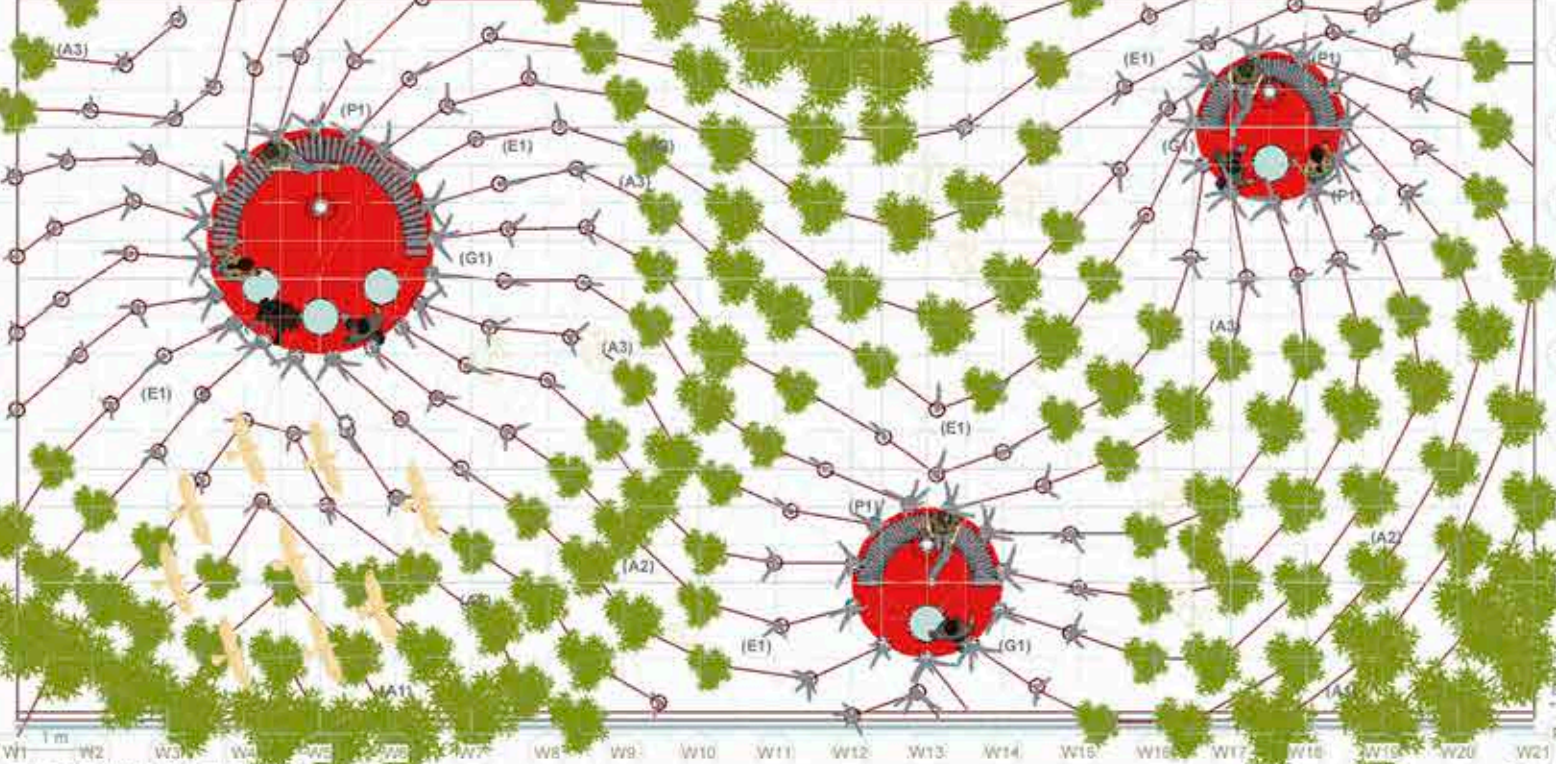
Scale

**PLANTATIONS**  
The list of suggested plants selected among local species is based on native plantations of riparian herbs and shrubs that resist fire and provide the basis of life and a food sources as well as protection against the water reservoir evaporation. They are woody landscape plants able to tolerate wet conditions. This will help attract indigenous wildlife and creates an environment that essentially requires no maintenance.

**PAVEMENTS**  
The pavement of cuisine areas is red label, around heating pipes is white gravel and as general pavement limestone sand



THE RED SUPREMACY\_FIRE Main Section E: 1/100

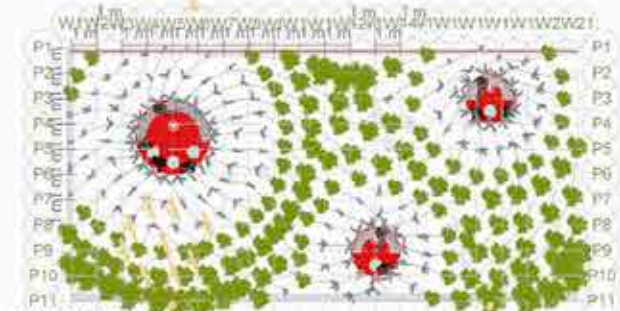


THE RED SUPREMACY\_FIRE Main Plan Scale 1:100

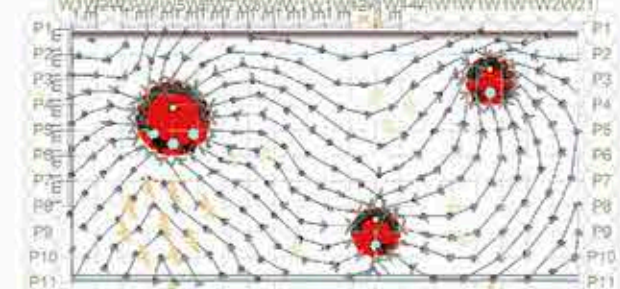
Scale

**THE RED SUPREMACY.** Fire as *Mitsugawa* has historically had negative connotations. Fire as *mitsugawa* can create unique forms of beauty. Both are a natural part of many forest ecosystems, and can serve to renew and invigorate forests. The installations incorporate activities and event, cuisines areas and sitting places.

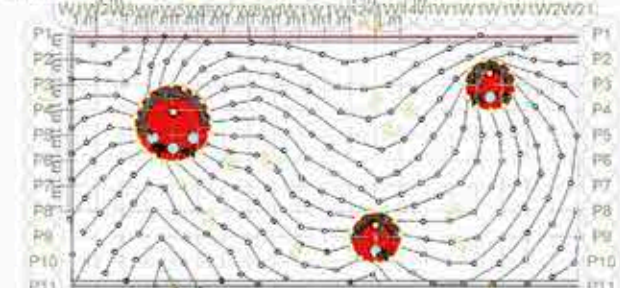
NEW SEEDS PLAN



BURNT TREES PLAN



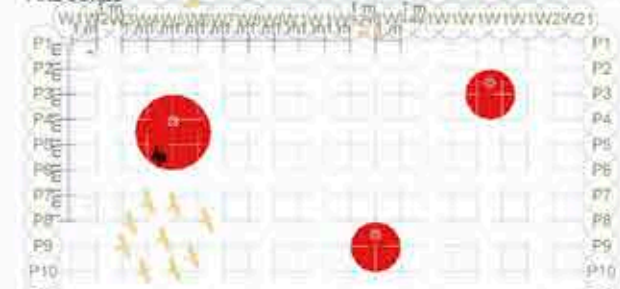
HEAT PIPES



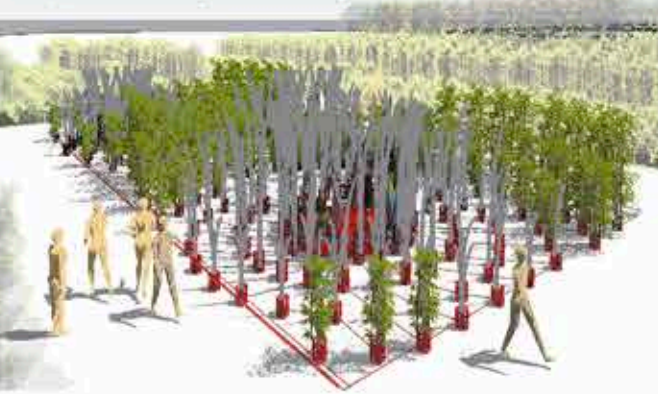
CUISINE NODES



FIRE CORES



**METHOD.** 1. Three fire nodes are settled. 2. People are attracted by the presence of fire. 3. A network of heat pipes is spreaded. 4. A burnt forest is installed around the heat pipes. 5. A new seed generation starts to grow.



**NEW SEEDS.** Some seeds also need the heat of fire to germinate. Small plant rise from the barren and burnt forest fire ground bringing new life to the area, only after a few months after the fire ravaged the area. Climate change is likely contributing to this increase in drought conditions.



**BURNT FOREST.** Fire is a natural part of many forest ecosystems, and can serve to renew and invigorate forests. Forests recover from fires through germination of seed stored in the forest floor. Ashes left behind after low intensity fires can increase the availability of nutrients and organic matter to the soil and to plants.



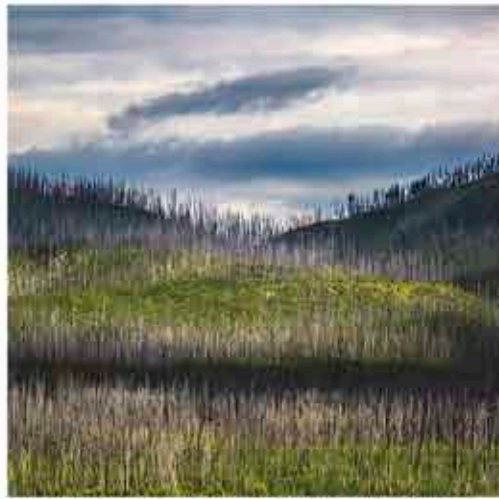
**HEAT PIPES.** A heat pipe is a heat-transfer device that combines the principles of both thermal conductivity and phase-transition to effectively transfer heat between two solid interfaces.



**CUISINES NODES.** The shift from raw to cooked foods was the key factor in human evolution. In short, once our ancestors adapted to using fire, humanity began, said renowned primatologist Richard Wrangham. Cooking became the basis for pair bonding and marriage, created the household, and even led to a sexual division of labor.



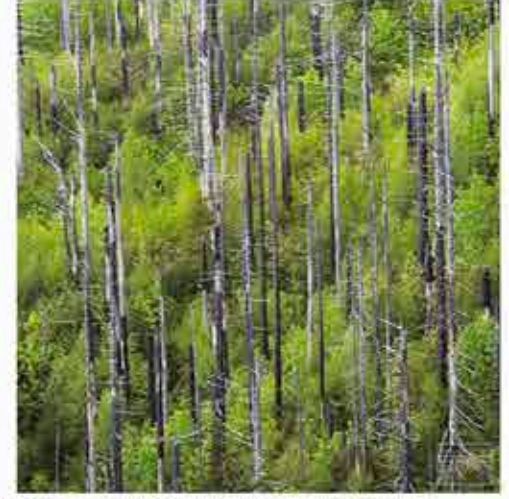
**FIRE CORES.** Fire is a natural part of the circle of life yet we are seeing more than prior generations. The instinct is to be sad or angry with what is lost and hard to see what all these fire will bring that is positive. This location was burned. The mix of dead trunks with undergrowth in winter, or spring as seen with green has the very different look it shows off based on the season. (*Eucalyptus* and *Pinus* spp.)



"Nature Strong" - In a forest of dead tree trunks from a forest fire is an abundance of life growing up to take their place. Glacier National Park, Montana. Adrian Klein.



"The Forest Cycle" - This location in the Columbia Gorge was burned ~20 years ago. The mix of dead trunks with undergrowth in winter, or spring as seen with green, really caught my eye. You can see the very different look it shows off based on the season. Adrian Klein.



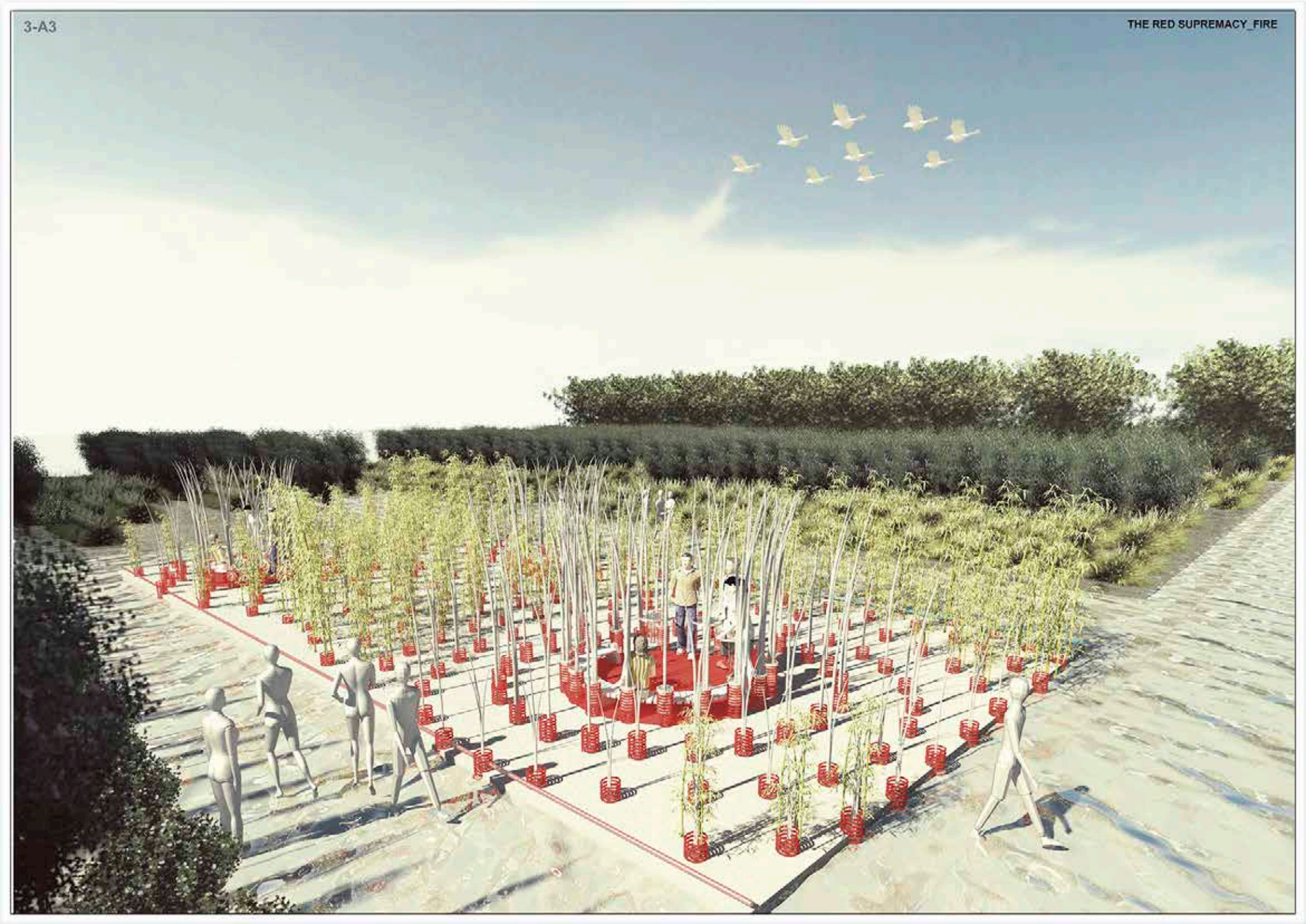
**THERMODYNAMIC PARAMETERS**  
 Quebec (hardiness zone of 4b)

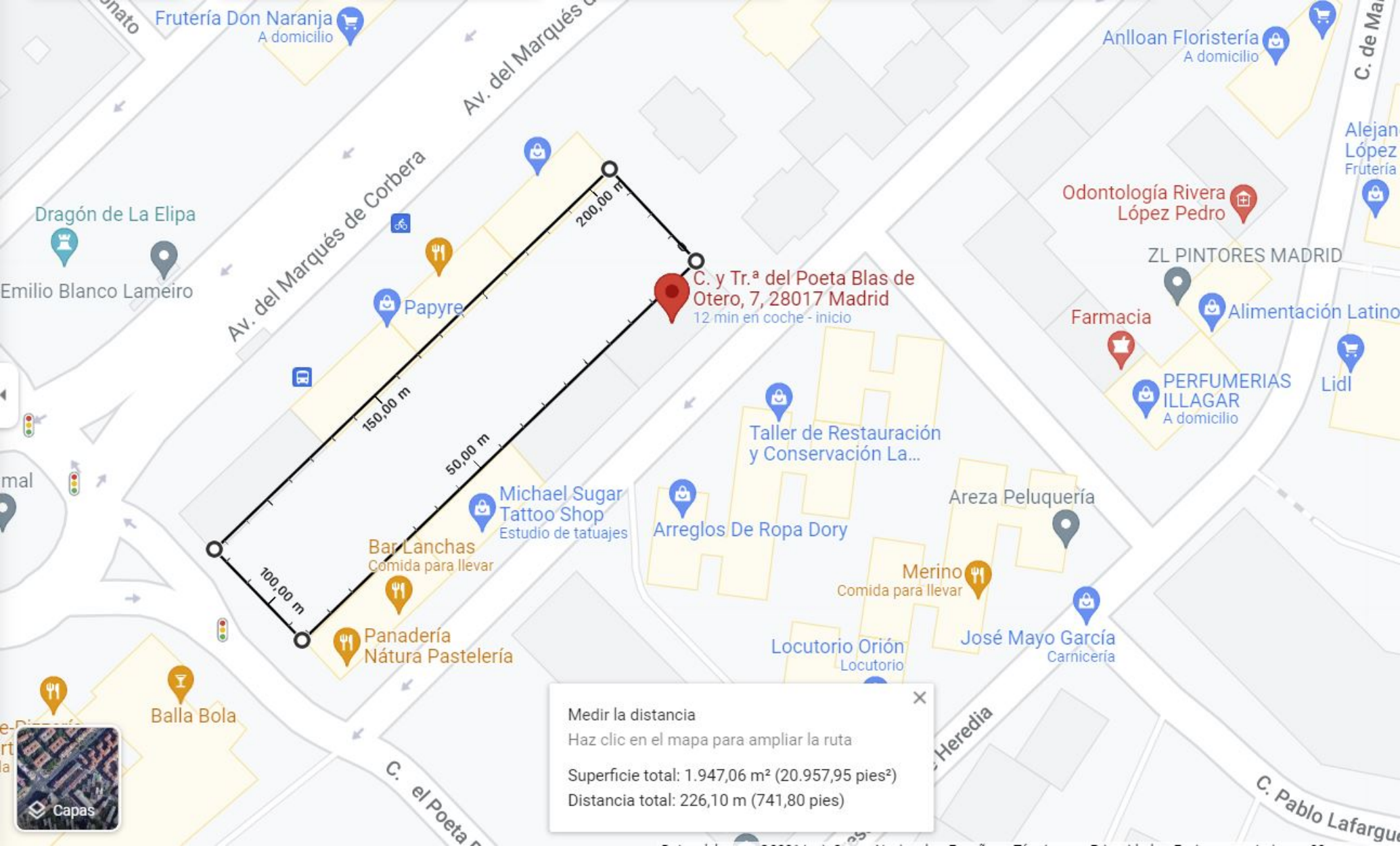
**TEMPERATURE**  
 T<sup>o</sup> Max: 25°C  
 T<sup>o</sup> Min: -17°C  
 Warm season: May 27- September 20: 30°C / 15°C  
 Cold season: December 5- March 10: -17°C / -8°C

**AIR MOVEMENTS (wind or currents, troughs)**  
 Wind: 0-9m/s  
 Warm season: E  
 Cold season: W

**PLUVIOSITY / SNOW**  
 Snow: 56%  
 Fall season: October 29-April 14  
 Precipitation: 695mm  
 Warm season: May 27- September 20: 54%  
 Cold season: December 5- March 10: 67%

**AIR HUMIDITY (fog)**  
 Humidity: 44%-95%  
 Most dried: May 15  
 Most humid: September 25





Medir la distancia ✕

Haz clic en el mapa para ampliar la ruta

Superficie total: 1.947,06 m<sup>2</sup> (20.957,95 pies<sup>2</sup>)

Distancia total: 226,10 m (741,80 pies)

Frutería Don Naranja  
A domicilio

Anlloan Floristería  
A domicilio

Dragón de La Elipa

Emilio Blanco Lameiro

Av. del Marqués de Corbera

Av. del Marqués de Corbera

Papyre

C. y Tr.ª del Poeta Blas de Otero, 7, 28017 Madrid  
12 min en coche - inicio

Odontología Rivera López Pedro

ZL PINTORES MADRID

Farmacia

Alimentación Latino

PERFUMERIAS ILLAGAR  
A domicilio

Lidl

Taller de Restauración y Conservación La...

Michael Sugar  
Tattoo Shop  
Estudio de tatuajes

Arreglos De Ropa Dory

Areza Peluquería

Bar Lanchas  
Comida para llevar

Merino  
Comida para llevar

Balla Bola

Panadería  
Nátura Pastelería

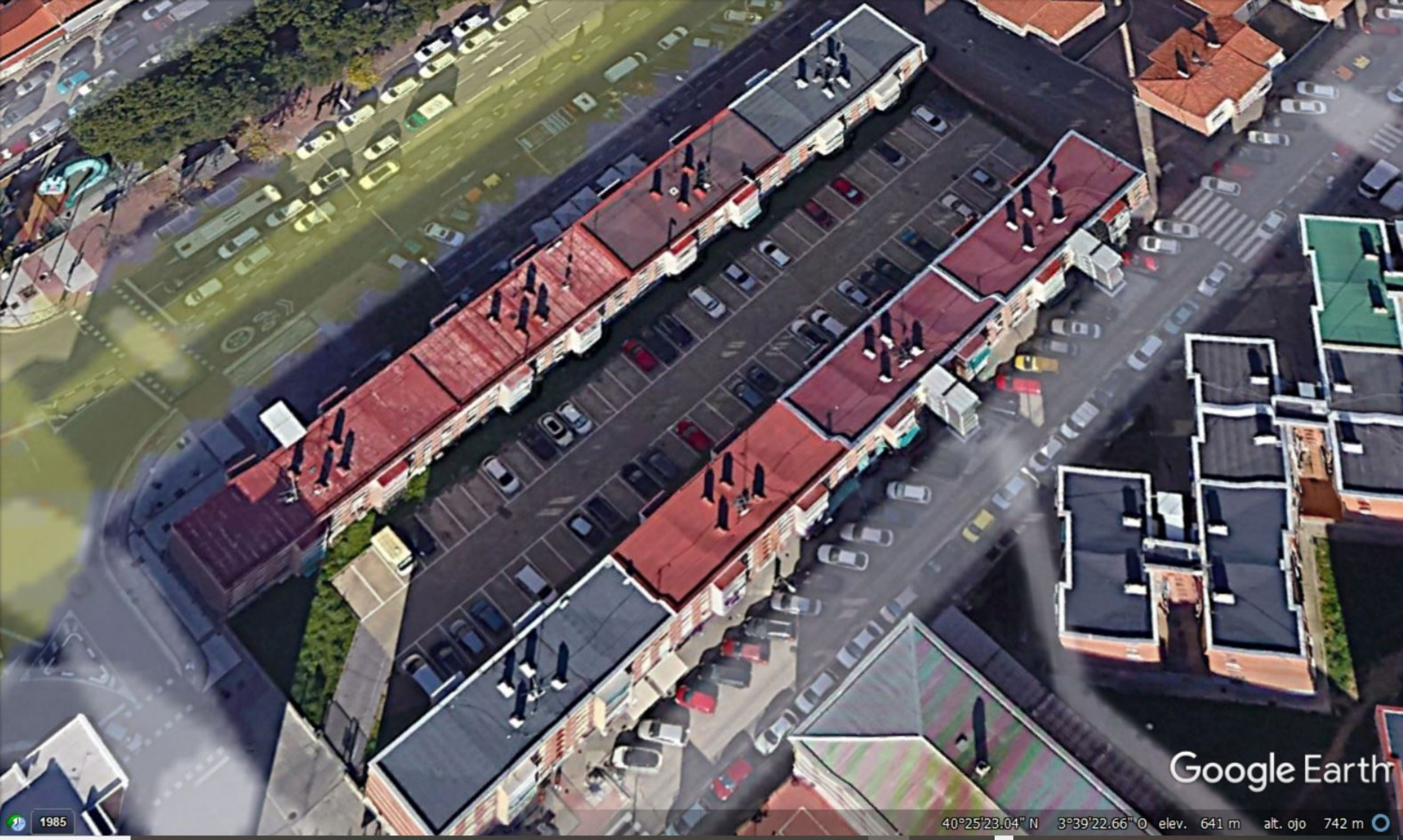
Locutorio Orión  
Locutorio

José Mayo García  
Carnicería

C. del Poeta

C. Heredia

C. Pablo Lafargu



Google Earth

1985

40°25'23.04" N 3°39'22.66" O elev. 641 m alt. ojo 742 m





- calle Ricardo Ortiz
- M-30
- calle O'Donnell
- Doctor Esquerdo
- avenida Mques. de Corbera

© 2021 Google

Google B

